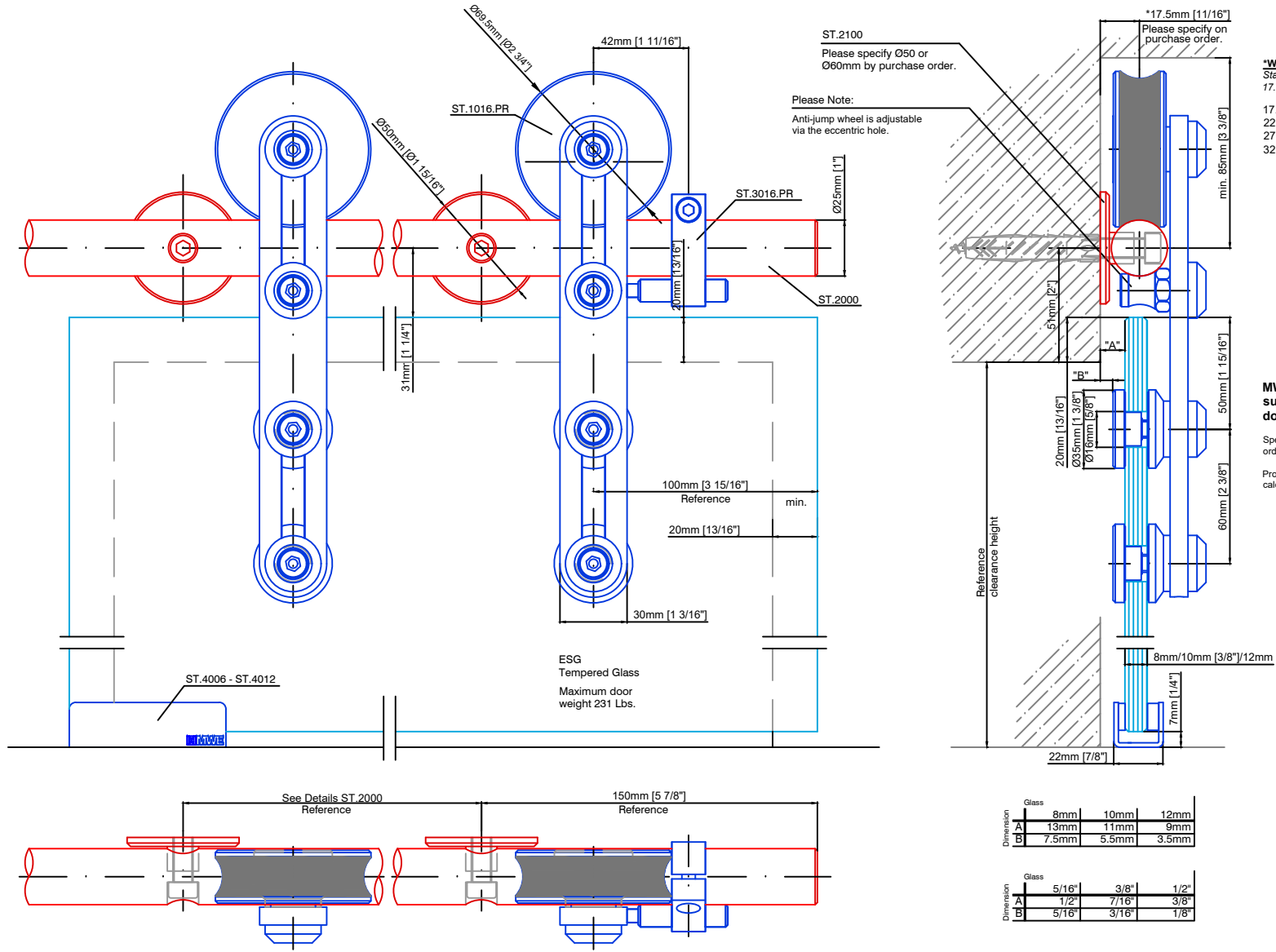


Technical drawings are subject to change without notice.
 All millimeter dimensions are exact and supersede inch conversions.

Copyright MWE NA Inc., all rights reserved. Reproduction or other use of these designs without written consent from MWE NA Inc. is prohibited.



***Wall Projection**
 Standard wall projection 17.5mm (wall to center rail)
 17.5mm - 52.5mm available

| | |
|------------------|-------------------|
| 17.5mm [1 1/16"] | 37.5mm [1 1/2"] |
| 22.5mm [7/8"] | 42.5mm [1 11/16"] |
| 27.5mm [1 1/16"] | 47.5mm [1 7/8"] |
| 32.5mm [1 1/4"] | 52.5mm [2 1/16"] |

MWE wheel assemblies are suitable for all US standard door thicknesses!

Specify door thickness on purchase order.
 Projection of center rail to wall will be calculated.

| Dimension | Glass | 8mm | 10mm | 12mm |
|-----------|-------|-------|-------|-------|
| A | | 13mm | 11mm | 9mm |
| B | | 7.5mm | 5.5mm | 3.5mm |

| Dimension | Glass | 5/16" | 3/8" | 1/2" |
|-----------|-------|-------|-------|------|
| A | | 1/2" | 7/16" | 3/8" |
| B | | 5/16" | 3/16" | 1/8" |

Protec ST.1016.PR

Date Prepared: July 2018

Prepared By: CDA | JRT



Email: info@mwe-na.com
www.mwe-na.com